



HAVELLS

enviro
HARNESSING LIGHT. HARVESTING ENERGY.

**LET THE SUN POWER
YOUR BUSINESS**



**Havells
Commercial and Industrial
Solar Grid-Tie Inverter
20 kW to 60 kW**

**7 YEARS
WARRANTY**



Introduction of

Havells

Havells India Limited is a leading Fast Moving Electrical Goods (FMEG) Company and a major power distribution equipment manufacturer with a strong global presence. Havells enjoys enviable market dominance across a wide spectrum of products, including Industrial & Domestic Circuit Protection Devices, Cables & Wires, Motors, Fans, Modular Switches, Home Appliances, Air Conditioners, Electric Water Heaters, Power Capacitors, CFL Lamps, Luminaires for Domestic, Commercial and Industrial Applications.

Today, Havells owns some of the most prestigious brands like Havells, Lloyd, Crabtree, Standard and Promptec. Its network constitutes of 4000 professionals, over 7575 dealers and 40 branches in the country. Our products are available in 40 countries. The company has twelve state-of-the-art manufacturing plants in India located at Haridwar, Baddi, Sahibabad, Faridabad, Assam, Alwar and Neemrana, manufacturing globally acclaimed products, synonymous with excellence and precision in the electrical industry.

The company pioneered the concept of exclusive brand showroom in the electrical industry with 'Havells Galaxy'. Today over 415 Havells Galaxies across the country are helping customers, both domestic and commercial, to choose from a wide variety of products for different applications. Havells became the first FMEG Company to offer door step service via its initiative 'Havells Connect'. Thanks to the quality of products and quicker service, it has minimum customer complaints and highest customer satisfaction.

Today, Havells along with its brands, have earned the distinction of being the preferred choice of electrical products for discerning individuals and industrial consumers both in India and abroad. Havells offers same quality products for both Indian and International markets. It is committed to keep powering the world with its state-of-the-art innovations and energy-efficient solutions. Currently over 90% of its product offerings are energy efficient and manufactured in-house.

Social and environmental responsibility has been at the forefront of Havells Operating Philosophy and as a result the company consistently contributes to socially responsible activities. For instance, the company is providing mid-day meal in government schools in Alwar district, covering more than 57000 students per day. The group company, QRG Healthcare runs a 140 bed hospital in Faridabad. In the past, the company has generously contributed to the society during various national calamities like the Bihar Flood, Tsunami and Kargil National Relief Fund, etc.

The essence of Havells' success lies in the expertise of its fine team of professionals, strong relationships with associates and the ability to adapt quickly & efficiently, coupled with the vision to always think ahead.



THREE PHASE INVERTER, MPPT, DC Switch & Wi-Fi

Enviro GTi 20000TD - 20 kW | Enviro GTi 30000TD - 30 kW | Enviro GTi 33000TD - 33 kW
Enviro GTi 50KT - 50 kW | Enviro GTi 60KT - 60 kW

FEATURES

- 7 years warranty
- Wide Input Voltage Range
- Maximum 98.6% Inverter Efficiency
- Inbuilt DC Switch.
- In-Built 25 Year Data Storage Capability
- Remote Monitoring – free for 25 years
- 4" LCD display
- Detachable cover for easy installation & maintenance
- Safety Protection- Anti islanding, Ground Fault monitoring
- Anti Reverse Power Controller - zero export (Optional)
- IEC Certification - As per MNRE

TECHNICAL SPECIFICATION OF THREE PHASE SOLAR GRID TIE INVERTER

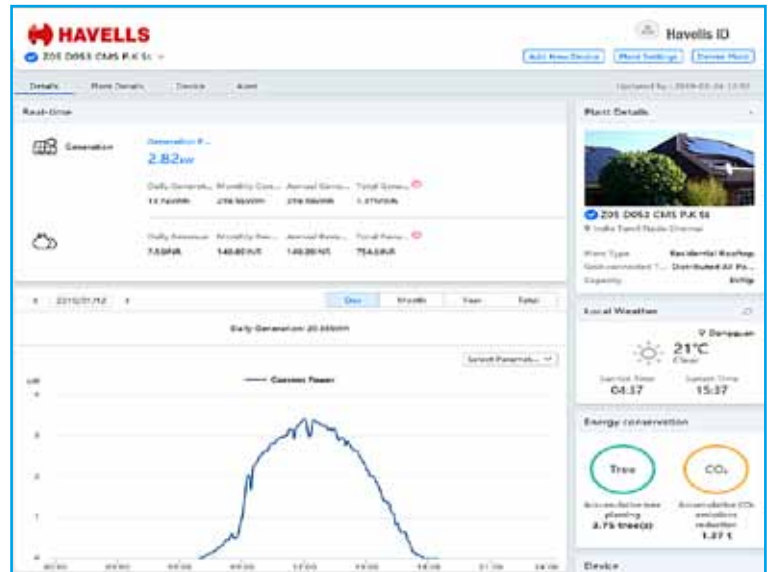
| DATASHEET | ENVIRO GTI 20000TD | ENVIRO GTI 30000TD | ENVIRO GTI 33000TD |
|---|--|-----------------------|-----------------------|
| Input (DC) | | | |
| Max. Input Power | 26000 W | 39000 W | 42900 W |
| Max DC Power for Single of MPPT | 13000 W | 18000 W | 20000 W |
| Number of independent MPPT | 2 | | |
| Number of DC Inputs | 2 for each MPPT | 3 for each MPPT | |
| Max. input voltage | 1100 V | | |
| Start-up input voltage | 250 V (+/-1 V) | | |
| Rated input voltage | 620 V | | |
| MPPT voltage range | 230 V - 960 V | | |
| Full load DC voltage range | 480 V - 850 V | 520 V - 850 V | 580 V - 850 V |
| Max. input current | 24 A / 24 A | 30 A / 30 A | 30 A / 30 A |
| Output (AC) | | | |
| Rated Power (@230 V, 50 Hz) | 20000 W | 30000 W | 33000 W |
| Max. AC Power | 22000 VA | 33000 VA | 36300 VA |
| Max. Output Current | 32 A | 48 A | 53 A |
| Nominal Grid Voltage | 3/N/PE, 230 V / 400 Vac | | |
| Grid Voltage Range | 310 Vac - 480 Vac | | |
| Nominal Frequency | 50 Hz / 60 Hz | | |
| Grid Frequency Range | 45 Hz ~ 55 Hz / 55 Hz ~ 65 Hz (According to local standard) | | |
| Active power adjustable range | 0~100% | | |
| THDi | <3% | | |
| Power factor | 1 (adjustable +/-0.8) | | |
| Performance | | | |
| Max. efficiency | 98.2% | 98.4% | 98.6% |
| European weighted efficiency | 98.0% | 98.2% | 98.2% |
| Self-consumption at night | <1 W | | |
| Feed-In start power | 45 W | | |
| MPPT efficiency | >99.9% | | |
| Protection | | | |
| DC Reverse Polarity Protection | Yes | | |
| DC switch | Yes | | |
| Protection class / overvoltage category | I/III | | |
| Safety protection | Anti islanding, RCMU, Ground fault monitoring | | |
| Certification | IEC 62116, IEC 61727, IEC 61683, IEC 60068 (1,2,14,30), IEC 62109-1/2, IEC 61000. | | |
| ARPC | Anti Reverse Power Controller (optional) | | |
| Communication | | | |
| Power management unit | According to certification and request | | |
| Standard Communication Mode | RS485, Wifi, GPRS (optional) SD Card, Multi-function relay | | |
| Operation Data Storage | 25 years | | |
| General Data | | | |
| Ambient temperature range | -25 °C...+60 °C | | |
| Topology | Transformerless | | |
| Degree of Protection | IP65 | | |
| Allowable relative humidity range | 0-100% no condensing | | |
| Max. operating altitude | <2000 M | | |
| Noise | <30 dB | <45 dB | <45 dB |
| Weight | 37 kg | | |
| Cooling | Natural | Fan | Fan |
| Dimension | 666 mm x 512 mm x 254 mm | | |
| Display | LCD display | | |
| Warranty | 7 years | | |

TECHNICAL SPECIFICATION OF THREE PHASE SOLAR GRID TIE INVERTER

| DATASHEET | ENVIRO GTI 50KT | ENVIRO GTI 60KT |
|---|---|---------------------------|
| Input (DC) | | |
| Max. Input Power | 55000 W | 66000 W |
| Max DC Power for Single of MPPT | 22000 W (500 V - 800 V) | 22000 W (530 V - 800 V) |
| Number of independent MPPT | 3 | |
| Number of DC Inputs | 4 / 3 / 3 | 4 / 4 / 4 |
| Max. input voltage | 1000 V | |
| Start-up input voltage | 350 V | |
| Rated input voltage | 600 V | 600 V |
| MPPT voltage range | 250 V - 960 V | |
| Full load DC voltage range | 500 V - 800 V | 530 V - 800 V |
| Max. input MPPT current | 40 A / 30 A / 30 A | 40 A / 40 A / 40 A |
| Max. input current per string | 12 A | |
| Output (AC) | | |
| Rated Power (@230 V, 50 Hz) | 50000 W | 60000 W |
| Max. AC Power | 50000 VA | 60000 VA |
| Max. Output Current | 80 A | 90 A |
| Nominal Grid Voltage | 3/N/PE, 3/P E, 230 V / 400 V ac | |
| Grid Voltage Range | 180 Vac - 270 Vac | |
| Nominal Frequency | 50 Hz / 60 Hz | |
| Grid Frequency Range | 45 Hz ~ 53 Hz | |
| Active power adjustable range | 0~100% | |
| THDi | <3% | |
| Power factor | 1 (adjustable +/-0.8) | |
| Performance | | |
| Max. efficiency | 98.5% | 98.6% |
| European weighted efficiency | 98.3% | 98.4% |
| Self-consumption at night | <1 W | |
| Feed-In start power | 45 W | |
| MPPT efficiency | >99.9% | |
| Protection | | |
| DC reverse polarity protection | Yes | |
| DC switch | Yes | |
| Protection class / overvoltage category | I/III | |
| Input/output SPD (II) | Optional | |
| Safety protection | Anti islanding, RCMU, Ground fault monitoring | |
| Certification | IEC 62116, IEC 61727, IEC 61683, IEC 60068 (1,2,14,30), IEC 62109-1/2, IEC 61000. | |
| SPD | MOV : Type III standard / Type II optional | |
| ARPC | Anti Reverse power controller (optional) | |
| Communication | | |
| Power management unit | According to certification and request | |
| Standard Communication Mode | RS485, Wifi (optional), SD Card, Multi-function relay | |
| Operation Data Storage | 25 years | |
| General Data | | |
| Ambient temperature range | -25 °C...+60 °C | |
| Topology | Transformerless | |
| Degree of Protection | IP65 | |
| Allowable relative humidity range | 0-100% no condensing | |
| Max. operating altitude | 4000 m | |
| Noise | <60 dB | <60 dB |
| Weight | 68 kg | 70 kg |
| Cooling | Fan | |
| Dimension | 737 mm x 713 mm x 297 mm | |
| Display | LCD display | |
| Warranty | 7 years | |

FEATURES

- Web based Remote monitoring
- User-friendly & easy access via Internet
- Real Time Data-logging and historical data storage for analysis
- Data available with various graph and format options for easy understanding and analysis
- Automatic alarms for any malfunctions via Email or SMS



REGIONAL & BRANCH OFFICES:

NORTH - REGIONAL OFFICE: Corporate Office: QRG Towers, 2D, Sector-126, Expressway, Noida-201304, Tel: 0120-3331000, **Delhi:** Tel: 011-47676700, 23888200, **Chandigarh:** Tel: 0172-4232400-401, **Dehradun:** Tel: 0135-6670202, **Noida / Haryana:** Tel: 0120-3331000, **Ludhiana:** Tel: 0161-4676000 / 24, **Jammu:** Tel: 0191-2478330, 2479330, **Sri Nagar:** Tel: 0194-2490431, **Jaipur:** Tel: 0141-3914645, 3988210 **Jodhpur:** Tel: 0291-9214201640 / 45, **Lucknow:** Tel: 0522-6672100, **Kanpur:** Tel: 0512-6710400, 6710409

EAST - REGIONAL OFFICE: **Kolkata:** ICC Tower, 5th Floor, 4 India Exchange Place, Kolkata-700001, Tel: 033-40129851 / 52, **Bhubaneswar:** Tel: 0674-6668101/102/103/104, **Guwahati:** Tel: 0361-2134521, 2458923, 2460355, **Siliguri:** Tel: 0353-2525907, **Ranchi:** 0651-2244861, 2244862, 2244864, 2244868, 2244869, **Jamshedpur:** Tel: 0657-6542492, 09234369436, **Patna:** Tel: 0612-2207221, 2207222, 2207223, 2655518

WEST - REGIONAL OFFICE: **Mumbai:** 1271, Solitaire Corporate Park, Bldg. No. 12, 7th Floor, Andheri - Ghatkopar Link Road, Chakala, Andheri (East), Mumbai- 400093. Ph.: 022 - 67298600-602, **Ahmedabad:** Tel: 079-40061111, 40060738-740, **Indore:** Tel: 0731-2572340-41, 4009998 (Airtel), **Rajkot:** Tel: 0281-2481112, 2921212, **Nagpur:** Tel: 0712-2240932, 2242692, 2242699 **Pune:** Tel: 020-64016413 / 14, **Raipur:** Tel: 0771-4243400 / 01, **Surat:** Tel: 0261-2350137, 9979890137, **Jabalpur:** Tel: 0761-4064491

SOUTH - REGIONAL OFFICE: **Chennai:** Sigapi Achi Building, No. 18 / 3, 6th Floor, Rukmani Lakshmiipathy Road, Egmore, Chennai-600008, Tel: 044-42280600, 605, **Bangalore:** Tel: 080-49075000, **Coimbatore:** Tel: 0422-4550200, 2305199, 2306199, **Hyderabad:** Tel: 040-27533372, 27533355, 27533632, 66320407/0408/6401/6402, **Kochi:** Tel: 0484-4099000, **Vizag:** Tel: 0891-6514339, **Vijayawada:** Tel: +91-9247058847/57, **Calicut:** 0495-4019194, **Madurai:** 0452-4267022, **Trivandrum:** 0471-4015323, **Hubli:** 09448146028, **Trichy:** 09944460160

Representative Offices: • Goa • Solapur • Gwalior • Kathmandu • Bhopal

Actual products may vary in colour, design, description and colour combination etc.
Although every effort has been made to ensure accuracy in the compilation of the technical detail within this publication. Specifications & performance data are constantly changing.
Current details should therefore be checked with Havells Group.
"Copyright Subsists. Imitation of trade dress, graphics and color scheme of this document is a punishable offence."



HAVELLS

Havells India Ltd.

QRG Towers, 2D, Sector -126, Expressway, Noida - 201 304 (UP), Ph. +91-120-3331000,

E-mail: marketing@havells.com, www.havells.com

Consumer Care No.: 1800 11 0303, 1800 103 1313 (All Connections), 011-4166 0303 (Landline)

Join us on Facebook at www.facebook.com/havells and share your ways to save the planet!

CIN - L31900DL1983PLC016304.

Scan the QR Code
to download
Havells mCatalogue

